

PLT-CSST CORRUGATED STAINLESS STEEL TUBES

EUROSOLAR SOLAR-PRESS

Corrugated stainless steel tubes in AISI 304 with insulation for thermal solar installations



DESCRIPTION

The specific structure of the EUROSOLAR tube, resistant to pressure and deformation, allows creating any "cold-shape" forming, with angles up to 180 °, without the use of special bending tools.

The performance characteristics of the EUROTIS srl PLT-CSST pipe are linked not only to the quality of the steel but above all to the following two factors:

- corrugations' bending radius and hose pitch give the PLT-CSST pipe the maximum efficiency during the bending phase and allow the reduction of the internal diameter and the relative flow rate to be negligible along the bend.
- the minimum thicknesses of 0.3 mm give the pipes a high impact resistance, a remarkable resistance to crushing and an excellent functionality when bending.

The particular qualities previously described give the PLT-CSST pipe physical characteristics of semi-rigidity, which allows easy changes of direction without the use of fittings, during the installation.



Suitable for water with glycol

DN:

15, 20 and 25.

DN is the nominal internal diameter

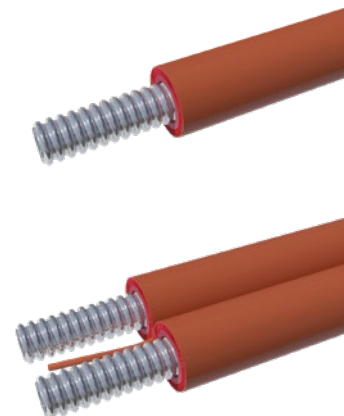
There are 2 types of corrugated stainless steel tubes in AISI 304 with insulation for thermal solar installations:

SOLAR-PRESS (single)

Single PLT-CSST AISI 304 stainless steel tube with red roof polyurethane thermal insulation, without electric cable, for thermal solar installations.

SOLAR-PRESS (double)

Double PLT-CSST AISI 304 stainless steel tube with electric cable and red roof polyurethane thermal insulation for solar thermal installations.



TECHNICAL CHARACTERISTICS

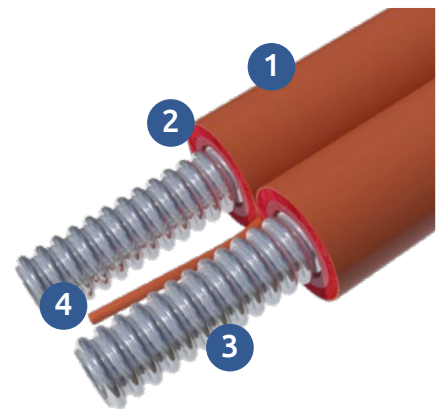
Id: Internal diameter
Ed: External diameter
Th: Thickness PLT-CSST
P: Pitch



DN	Thread connection	Id mm	Ed mm	Th mm	P mm
15	3/4"	15,8	20,0	0,30	5,5
20	1"	19,7	25,0	0,30	6,4
25	1"1/4	26,5	33,0	0,30	7,1

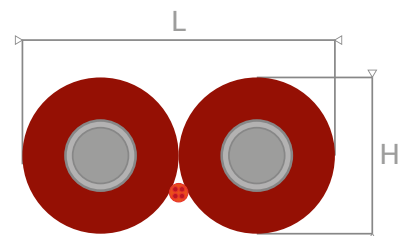
STRUCTURE

- 1 - External protective coating
- 2 - Expanded Polyutherane
- 3 - PLT-CSST tubes
- 4 - Multi-phase electric cable



SOLAR-PRESS COUPLED DIMENSIONS

DN	H mm	L mm
15	38	76
20	43	86
25	51	102



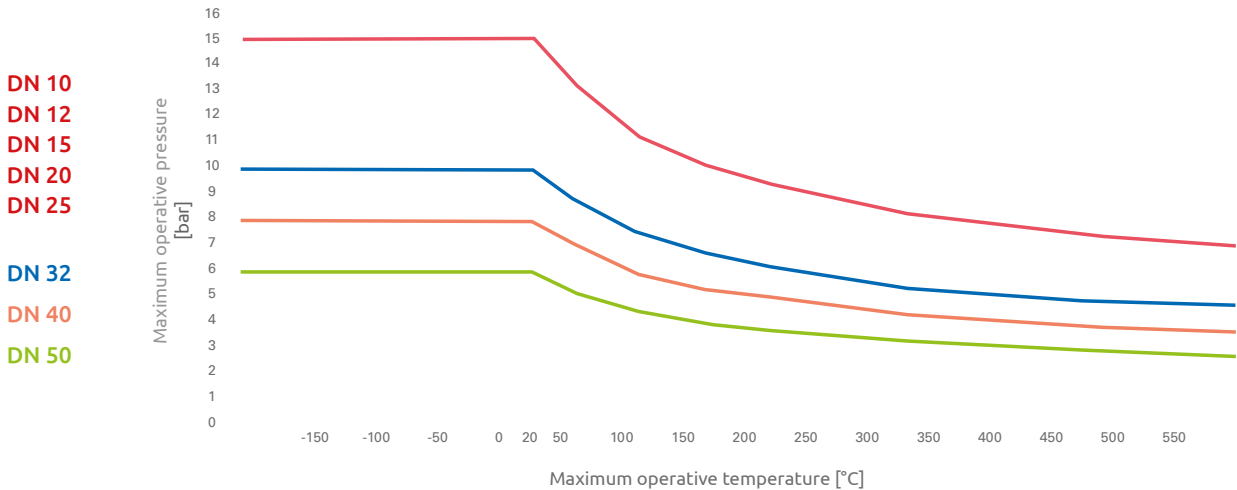
THECNICAL CHARACTERISTICS SILICONE MULTI-PHASE ELECTRIC CABLE

Type	Nominal diameter mm	Insulation thickness mm	Nominal conductor construction	Temperature rating °C
4 x 0,25 mm ²	5,1 +/- 0,2	0,4	8 wires x 0,2 mm	-60 ÷ +180 °C

TECHNICAL CHARACTERISTICS OF PLT-CSST

- Material: austenitic stainless steel AISI 304 (designation: 1.4301 - X5CrNi18-10). Complying with EN10028-7.
- Insulation material: expanded polyetherane PU
- Maximum operative temperature: 150°C.
- The following table gives an indication of the pressure values to vary the temperature after which the PLT-CSST tube of EUROTIS srl begins the process of permanent linear expansion higher than 1%. The pressure values therefore do not indicate the structural failure that occurs at considerably higher pressures than those indicated.

Operative pressure / temperature PLT-CSST tubes



TECHNICAL CHARACTERISTICS OF PLT-CSST AISI 304 WITH THERMAL INSULATION

DN	EPDM Thickness mm	Maximum working temperature °C	Minimum working temperature °C	Thermal conductivity W/mK
15	8,0	150°C continuous 175°C short peak	- 50 °C	0,030 (40°C)
20	8,0	150°C continuous 175°C short peak	- 50 °C	0,030 (40°C)
25	8,0	150°C continuous 175°C short peak	- 50 °C	0,030 (40°C)

EUROTIS
Creating solutions

Eurotis S.r.l.
Via Quintino Sella 1 - ang. via A. Volta
20094 Corsico - MI
Tel. +39 02 4501442 - Fax +39 02 4503023
info@eurotis.it

www.eurotis.it